

Annual General Meeting 2025

This year's annual meeting on July 26 marked a change at the helm of Friends of the Prom with Olga Wilkinson, after the maximum allowed three years on the job, handing the reins to Karin Ruff as President. Olga will remain on the committee as Vice President.

Karin offered a brief tribute of Olga's three years as President, noting she's been a "really friendly person who's been great to work with."

Anyone who has attended one of the FOTP working bees would attest to Karin's comments, with Olga going out of her way to make sure everyone was recognised, knew each other and was across the tasks for the day.

She was also extraordinarily patient in answering myriad member queries on such perennial questions like how to sign in to Parks Connect, along with her ongoing role as media spokesperson for FOTP.

The annual meeting was held at the Sandy Point Community Centre because the Parks office at Tidal River was under repair. Forty people attended. Treasurer

Peter McDowell said FOTP now has 134 financial members with 23 new members last financial year.

In her final President's address, Olga noted during the year some 400 volunteers attended work days clocking up a total of 2,425 hours of assistance, in a range of activities from a hooded plover workshop to sea spurge removal to plantings, the regular nursery days and grassland restoration.

Two members, Kelsey Fraser and Michelle Darling, represented the organisation at a Parliamentary Landcare day in Melbourne.

Mary Walker received a special call out for her extraordinary diligence running the nursery and accompanying plantings, with a group of volunteers every fortnight, collecting seeds and propagating plants to help regenerate the Prom and increase vegetation for the wildlife.

In all, volunteer hours increased by a pleasing 10 per cent over the year.

The meeting elected the new committee and paid tribute to retiring member Chris Beckingsale who remains an active nursery based FOTP member.



New Committee: Rear from left to right: Katrin McMahon, Andree Fox, Olga Wilkinson, Michelle Darling, Peter McDowell (Treasurer) (Photo by: Thomas Gengenbach)
Front: John Durie (Editor), Keith McDougall (Secretary), Karin Ruff (President), Peter Wilson, Kelsey Fraser



FRIENDS
— OF THE —
PROM

WHAT'S INSIDE

- 1 AGM 2025
- 2 Olga and Karin; new committee members
- 3 Park update; Vale Barb
- 4 A sad finale and a new beginning
- 5 Grassland restoration
- 6 National Tree Planting
- 7-10 Cultural Heritage meeting
- 11 General Information
- 12 Calendar of Events 2025; Contacts

NEWSLETTER
#241
AUGUST 2025

Olga steps down as Karin steps up

Olga Wilkinson has stepped down from the Friends of the Prom president role after three years in the job. Active members will be familiar with Olga's welcoming presence at nursery Thursdays and weekend activities, particularly on overnight camps at Stockyards or Tidal River where she is the sociable host.

In 2022, Olga reluctantly agreed to nominate for the president's role thinking she didn't have the qualifications – yet another case of 'impostor syndrome'. But many who worked with Olga thought otherwise and recognised her straight-talking ability to cut through the crap and break down social barriers.

By 2025 Olga says she had grown into the president's role. She had enjoyed working closely with other committee members and learning about what goes on behind the scenes at the Prom through the liaison meetings with park managers; gaining new skills in organising and running activities and committee meetings; and most of all, interacting with people through helping other volunteers with their issues or responding to media enquiries.



Happily, we are not losing Olga just yet as she has agreed to stay on the committee as vice-president, where she will continue to be our primary media contact.

Thanks, Olga, for making Friends of the Prom a more friendly and welcoming group.

by Bill Hansen

New President Karin Ruff posted this note about herself.

"I enjoy living in Yanakie and having ready access to many outdoor activities. I'm a retired secondary school language teacher returning to my favourite interests of biology and geography and love being a grandmother and having family stay with us to enjoy the nature of the Prom. I also enjoy international folk dance, yoga, reading, gardening and travel. My resolve on retiring was to never again attend a meeting, which hasn't quite worked out..."

Top: Olga working in the nursery

Below: Karin working at Squeaky beach
(Photo: Karli Duckett)

New Committee members

John Durie

John is a relatively new member, but as a frequent Prom visitor from Sandy Point, is a keen supporter of FOTP and its work helping the Parks Victoria Rangers regenerate the Prom.

John is a business journalist of 45 years standing with the *Australian Financial Review* and the *Australian, The Times* and *New York Post*.

He will take special responsibility for the newsletter.

His partner Chris Beckingsale is a keen member of the nursery team and former Committee member.

Ann Marsh

After purchasing a property in Walkerville 4 years ago and making the permanent move to South Gippsland 18 months ago, Ann is passionate about human care and earth care and the space where these two things intersect for the betterment of both. She also participates in South Gippsland Landcare activities, and is a committee member of the Walkerville Residents and Ratepayers Association, where she has most recently been focused on working with residents to eradicate invasive weeds in the Walkerville area. Ann is excited to join our committee to

explore ways in which she can support our community to further engage with and care for the Prom.



Park update

Following the AGM, Parks Victoria Rangers Tara Ellard and Brooke Love addressed the meeting to update members on work around the Prom.

Tara discussed the Prom Sanctuary and the work of a project working group and the work done with the three traditional owners and conservation groups on a range of activities from erosion to deer shooting. She will shortly welcome new team members including Maggie Brown, who will be a key liaison person for FOTP, and Ruby Wicks.

Parks Victoria is combining their maritime team to be based in Foster. One of the key issues being examined is how to manage peak periods at the Park, particularly at popular locations like Squeaky Beach. The park has in place an historical cap of 800 cars a day but at times has had as many as 1,600 cars. Alternatives like park and ride facilities and returning to the past practice of shutting the park once load limits are reached are among the alternatives being discussed.

The Seal Cove boardwalk is at the stage of contractor finalisation with work due to commence in the spring.

The planned exclusion fence to keep out feral animals is also aimed to start in Spring, with the project aimed for completion in the middle of next year.

Parks Victoria at the Prom receives tied funding for special projects including protecting biodiversity. Work here includes the introduction of Eastern Bristlebirds and *pookila* which are local rodents facing threats from habitat loss. *Pookila* comes from the *Ngarigo* word for the mouse and is the indigenous name for what some call the New Holland Mouse.

Brooke Love updated the meeting on the progress of restoration work in conjunction with FOTP volunteers,

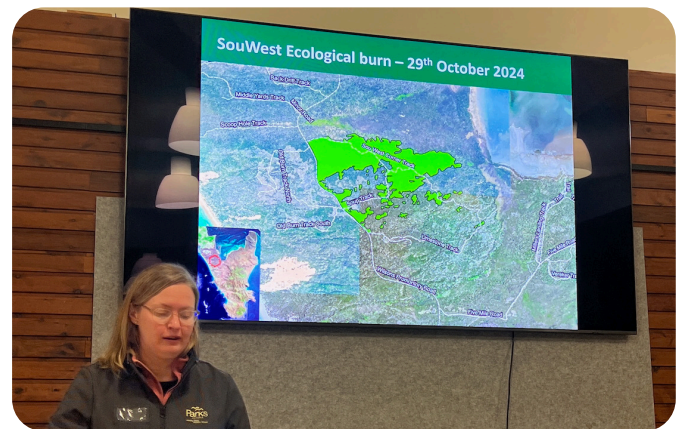
including the Koala habitat restoration where over 200 trees were planted around the Yanakie Airbase.

Restoration involves clearing the land by burning, adding mulch and then replanting work. Varney grasslands, site of the now completed long running dung flingers project is a good example of what Parks Victoria hopes to repeat across the Isthmus. A burn, with the help of indigenous groups, is planned for August.

The Nature Fund is also working with the Wilsons Prom National Park restoration project including mapping vegetation and weed control on the offshore islands.

The work involves the Department of Energy, Environment and Climate Action and work with academics, who are studying aspects of the restoration and also the impact of fires.

Report by Bill Hansen



Above: Brooke showing the new Sou'West burn site (Photo: Karin Ruff)

Vale Barb

We were sad to hear that Barb Wellstead passed away recently, aged eighty-one. Barb had been a regular volunteer at the Friends of the Prom nursery at Tidal River since early 2021.

She had been battling Parkinsons disease which affected her mobility and relied on a walking frame to get about. However, Barb looked beyond her ailments with a positive outlook and was determined to make a useful contribution to the Prom. Her speciality was sharpening and maintaining our ample collection of tools at the nursery. After Barb got to work, volunteers suddenly found those stiff and rusty old secateurs and tree-loppers were as good as new.

With the help of her friend and neighbour Antoinette, Barb made the 280 km round trip from her home in Corinella to the Prom once a fortnight to help in the nursery.

Earlier this year, Barb's health was no longer up to making the journey to the Prom, but as a final gesture of support for the work done by Friends of the Prom, she gifted a generous donation to the nursery.



A sad finale and a new beginning

The Dungflingers' task of monitoring grazing animal droppings at Varney's Grasslands on the isthmus has officially ended. On Friday 13 May, 22 volunteers under the supervision of rangers Brooke and Matt visited the grasslands for one final time to remove the metal stakes that marked the 139 monitoring sites.

We began collecting data at Varneys Grasslands in 2017 and the final count was in October 2024. This amounts to an impressive 8 years of collecting data from each monitoring site at six-weekly intervals during the cooler months, with a break over summer. This was a sad finale because being out in these remote grasslands counting and flinging dung was enjoyable. It attracted a dedicated pool of volunteers and we always had good attendances despite the Tuesday time slot.

The data we collected were fed back to Parks Victoria's scientists. They analysed it to estimate grazing animal populations and link these with the condition of the regenerating grasslands. Their findings were used to inform the Prom's animal control

program. The Dungflingers' project ended when the scientists could show that the population of grazing animals had reached a balance with a healthy self-sustaining grassland. Our data lives on because the scientific findings from this project will inform other restoration projects at the Prom and elsewhere.

After lunch we drove several kilometres to our new restoration project site on the South West Corner Track where a large area was subjected to a recent controlled burn. We stopped in an area which Brooke introduced as our next project area – this is our new beginning.

At first sight, the burnt area has a desolate appearance with the black and white skeletal trunks of burnt Tea Tree both upright and fallen and the bare sandy soil of the steep dunes. However there are many signs of life re-emerging – the first plant you notice is the widespread white flower stems of Early Nancy (*Wurmbea dioica*); quickly followed by vivid green clusters of Coast Bitter Bush (*Adriana quadripartita*), Kangaroo Apple (*Solanum aviculare*)

and White Elderberry (*Sambucus Gaudichaudiana*); and the spreading ground cover of Kidney Weed (*Dichondra repens*) and Coast Swainson-Pea (*Swainsona lessertifolia*). And of course, amongst these indigenous plants we found not-so-welcome plants and weeds such as Coast Wattle and Deadly Nightshade.

Brooke explained that our work on the new restoration project will involve many tasks, and the focus could evolve as we see which tasks are most productive. These could include planting propagated grasses, collecting and sowing seed, finding ways of discouraging grazing animals from eating young seedlings by using strategically placed fallen timber and weeding unwanted plants and weeds.

In addition, we have changed the scheduled day to a Friday which should be more convenient for volunteers to attend.

There are at least 22 volunteers eager to get started on this new project.

Report by Karin Ruff



Clockwise from top left: Final lunch at Varney's grasslands, May 2025; volunteers check out regrowth on the new Sou' West Track project; brooke briefing volunteers at the Sou' West Track burn area

Grassland Restoration

The dung flingers have now become “dung flingers” (according to Brooke) and may now be known as the “Sou’ Westers”, after spending our first full day on the Grassland Restoration Project on the Sou’ West Track on the Yanakie Isthmus.

A large area from the road towards the coast had a successful tea tree control burn last November. Some flat areas by the track have been cleared of standing burnt timber by Brooke and the chain-saw team and so made safe for planting work. Tea trees have shallow roots, so their burnt trunks easily fall and so are dangerous to work amongst.

It was a cold day, but 18 volunteers gathered to learn about restoration ecologist Brooke Love’s plans for the new activities for the day. We started by digging up about 300 blady grass plants with their tubers at a site near Stockyard, then driving to the planting site on the Sou’ West Track.

Brooke had prepared 4 exclusion plots and 4 other areas for seeding and planting. Three exclusion plots were direct seeded with wallaby grass, kangaroo grass and oat grass,

with the hope that they grow well, safe from grazers, and then seed into the surrounding areas.

Brooke’s plan of building “cubbies” with sawn lengths of the fallen tea tree branches was very popular, and some impressive, impenetrable forts were constructed with great enthusiasm. Their inner areas were planted with blady grass and kangaroo grass tube stock grown in the Nursery. Then the forts were roofed with further branches to protect the plants.

As over 800 tube stock were brought in from the Nursery by Ranger Ben, Mary was quite sceptical about our chances of planting them all in a day, but by 2:30 ALL had been planted out – amazing! Most between fallen branches for protection from grazers, some in more open areas. There are few signs of grazers returning to the burnt area yet, so it will be interesting to see which plants grow best. The rain Brooke had ordered duly arrived later in the day too, when we were all already warming up again with a cup of tea and feeling happy about such a productive day’s work.

Report by Karin Ruff



Clockwise from top left:

Below: Karin, Mary and Jane restoring grassland (Photos: Chris Beckingsale)

National Tree Planting

Nursery co-ordinator Mary Walker was optimistically ambivalent as 20 hardy volunteers gathered under threatening skies on Sunday July 17 for the national tree planting day. The highlight for some was always going to be the BBQ lunch organised by ranger Cam Downing's colleagues to be fed around the worktable at the Prom Nursery.

At the 33rd Avenue camp ground near Normans' Beach, Cam was unloading the 330 plants prepared by the nursery volunteers, including poa grasses, Lomandra sword grass, bursaria, grevillea and some Bassian dog wood. By the time Olga rang the lunch time bell just about all the plants were in the ground, and the threatening skies had transformed into a very pleasant winter morning ideal for the job at hand.

It was a matter of removing some tree guards, restoring

the guards, weeding around the trees that had survived and digging holes for the new ones to help restore the vegetation around the Normans Beach camp sites and staking the new plants.

For nursery veterans, Katrin, Michelle, Olga and Andre, who had helped prepare the seedlings for the planting, it was a time to celebrate getting their hands dirty finishing the job with the plants now ready to flourish in the well watered soil.

Parks' Lynden was also on job complete with baby and daughter Allowyn. With the job nearly done it was time for an excellent Parks lunch and the highlight being Mary's nursery tours showing the uninitiated the almost high tech workspace she organises, complete with the skeleton of the much anticipated new hardening shed .

Report by John Durie



Clockwise from top left: industrious volunteers at the tree planting (Photos: John Durie)

Cultural heritage meeting

On Saturday June 14, Parks Traditional Owner Country and Sea Country Partnerships Advisor Clinton Morton explained the background and heritage of the Prom in an extraordinary eye-opening day for Friends of the Prom.

The 25 members present at Stockyard Camp were able to learn and gain insights into the Prom's history and Cultural Heritage and the role of past and present Traditional Owners and their long-time history at the Prom.

Clinton Morton is a Parks Victoria Ranger of nine years, who has been stationed at the Prom for three and a half years. Wilsons Prom is ground-breaking in so many ways, and one area perhaps less recognised is that Parks Victoria is working closely and collaboratively with the Traditional Owners to manage and care for Country. The three Traditional Owner groups at the Prom are the Boonwurrung, Bunurong, and Gunaikurnai.

Wilsons Prom is the only National Park in Victoria with this structure, which is even more remarkable considering these three groups are engaged in a Native Title claim that is in the Federal Courts right now. This claim created an adversarial backdrop to the talks. MCT (Managing Country Together) and the District Operations staff have set up a governance framework that includes a LSC (Leadership Steering Committee) and PWG (Project Working Group) with Traditional Owner representatives to ensure culturally sound decisions are made when it comes to land management strategies. It is integral to building long and lasting respectful Partnerships with the three Traditional Owner groups.

"The Partnership is based on respect and consistency, which means don't promise anything you can't deliver," Clinton said.

Clinton himself is a proud Wiradjuri man from central NSW.

"Wiradjuri are the people of the 3 bila (rivers). The 3 main rivers are Galari (the Lachlan River), Wambuul (the Macquarie River) and Marrambidya (the Murrumbidgee River). Milawa (the Murray River) borders our Country to the south," he explained.

Clinton's workshop covered his role, the life of the Traditional Owners, their lifestyle and work, and culminated in a visit to the banks of Shallow Inlet to show how nature and climate change impacts are damaging middens and other Aboriginal sites.

Among artifacts he showed the group was a small didgeridoo, a drum-like structure which makes a sound similar to female emus so when you play it, it attracts the male emus, which makes them easier to trap.

A bull roarer is another way to communicate with mob. Other items included cutting stones, which were used to scrape flesh from possum skins to make possum skin or kangaroo skin cloaks.



Above: Clinton addressing FOTP members at Stockyard Picnic area (Photos for this article by Kelsey Fraser)

Cultural heritage meeting cont...

He told us about emus, which may, in Clinton's words, not be so smart but in traditional lore they were more than just birds. They were Creator spirits. Each Mob has their own Creator being, for example for the Wiradjuri, Biamie is the Creator spirit who is represented by a giant emu that left signs as he travelled across the earth and then ascended into the sky, where he can be seen today watching over and giving guidance. When you look up at the Southern cross, the dark space within the cross is the Emu's head and the dark part within the Milky way is the Emu's body.

The direction the emu is facing informs Mob as to whether it is time for hunting or gathering eggs or time to leave them alone. Emus also illustrate the different roles some animals play with Traditional Owners as food, a source of company, amusement, and as spiritual guides. Male emus have the job of looking after the eggs and raising the young, after the eggs are laid by the females who then trot off to the next partner.

For Bunurong – Boon Wurrung as part of the Kulin Nation, Bunjil (eagle) and Whan (crow) are creator beings that soared through the skies above, looking over the land and people. For Gunaikurnai the Creator spirits are Boran (pelican) and Tuk (musk duck), who came down from the mountains and canoed across to the Prom.

Fire was one of the most important land management tools. It was managed by the people for different reasons, including to burn to encourage new grass growth or tubers and to create landscape templates, even sometimes to chase kangaroos off a cliff to trap them. Fire is integral to Aboriginal People for many things—food, warmth, safety and especially as a land management tool. It is also a Totem and has its own stories and dreamings. However, it is also something controlled by the Traditional Owners only, so you would not light a fire on someone else's Country.

As Traditional Owners (Custodians) of their Country there was an obligation to manage all of Country not just

the pretty bits. In good seasons you manage the harsher parts of the country, which guaranteed that in harder seasons you had left the prime spots to fall back to. Traditional management was focussed on abundance for all creatures and plants, as for something to exist in tangible terms, it must exist in the Dreaming so is respected and cared for through Cultural Obligations.

Parks agreements and collaborations with Traditional Owners have allowed progress on issues like the proposed Prom Sanctuary fence and Sealers Cove boardwalk reconstruction and upgrade of toilets and campgrounds at Sealers, Refuge and Little Waterloo Bays as part of the Southern Circuit Walk.

Morton explained, *"We all want toilets at Sealers Cove upgraded, but where and how? Sometimes it's just a matter of moving one metre to save impacting Cultural Heritage and sometimes adjusting designs to minimise ground disturbance, which protects the Heritage...The key was to*



Above left: exposed midden on banks of Shallow Inlet; right: wallaby footprints at Shallow Inlet

Cultural heritage meeting cont...

build relationships not projects,” he said.

Work on the fence is due to start this year and is aimed at preventing destructive feral animals like foxes, cats and deer from entering the park. It will also improve conservation programs, including invasive species control, large-scale habitat restoration and active threatened species recovery programs.

The Prom (Yiruk Wamoon) currently has 400 recorded Aboriginal sites but only a tiny proportion of Wilson Prom (Yiruk Wamoon) has been surveyed for Tangible Cultural Heritage, less than 1% of the 59,000 Ha that make up the Prom. Most of the large and most beautiful sites are now in private hands. The best sites were often the first sites to be taken up by European settlers, as these were the most productive areas with access to fresh water, and had been managed from the beginning of time to create abundance for all parts of the environment, not just what is best for humans.

The traditional owners were at first not supporters of the proposed predator-proof fence. They understand the benefits of the fence, but because previously only a small part of the Prom has been surveyed for Cultural Heritage, it took seven to eight months of work to establish just where to put the fence. Also, historically fences did not exist before Colonization and once they did, they were used to either keep Mobs in or out.

“These decisions are not decided by Parks Victoria alone. How the Traditional Owners ancestors are looked after, that needs to be guided 100 per cent by the Traditional Owners,” Clinton said.

“Managing Country Together is how we do this. It is Parks Victoria commitment to strong, meaningful partnerships with Traditional Owners. It is about understanding and respecting Traditional Owner rights and values, taking responsibility for protecting Aboriginal Cultural Heritage on the

parks estate and offering the best support we can to Aboriginal people working in the park management sector,” he added.

The native title claim over Wilsons Promontory National Park is a complex matter involving multiple Traditional Owner groups.

The Gunaikurnai people, who call the Prom, Yiruk (meaning rocky place), lodged a claim which ran from Wilsons Promontory to Cape Liptrap in 2014. It is currently part of a Federal Native Title case that has been lodged by Boon Wurrung that encompasses all of the Bunurong RAP area plus from Tarwin River to Wilsons Prom and up to Mirboo North. Wamoon is the Bunurong–Boonwurrung word for Wilsons Prom. The Gunaikurnai later decided to withdraw from the court case to focus on mediation with the other groups.



Above: Clinton pointing out sensitive sites

Clinton said that one of the challenges was, *“Traditional Owners lack trust with Government. Consistency is the key to gaining and maintaining trust,”* he emphasized.

Traditional owners say, *“Come walk with us, talk to us and let’s make these decisions together. Most of the best work is done yarning around a campfire,”* Clinton said.

The site FOTP visited with Clinton was a midden on Shallow Inlet and reached via Hourigan’s Camp Lane off Millar Road near Yanakie. *“Midden actually means rubbish tip. That is how they were first described by archaeologists...but it doesn’t translate very well,”* Clinton said.

Shell middens are the remains of meals of shellfish once gathered and eaten by traditional owner groups and when they moved on, they provided a history, so that the next group that came to the spot could see what others had eaten, how long ago and could moderate their diet accordingly.

The midden was evident by looking at the exposed embankment, but while the group was standing listening, one member identified a small stone used for cutting by the Traditional Owners. This finding underlined the richness of Traditional Owner Heritage in the Prom and explained why each step must be taken with the awareness of the long-time history of this land. This even includes work done with good intentions like weeding sea spurge.

Clinton explained that the land up to Darby River in the Prom was open all members of the clan but beyond Darby River it was replete with ceremonial sites and few people were allowed to visit Tidal River. He explained saying, *“(When I talk about) Culture and Heritage I am referring to the tangible items, the physical things that are still visible today, whether they be middens, which are generally full of shells (but sometimes contain burials), stone axes, stone tools, scar trees, or rock art.”*

“For Traditional Owners, it’s a very spiritual place and also a site of physical

Cultural heritage meeting cont...

evidence showing past occupation. These things are so old," he added.

"We have one midden along the west coast of the Prom here that is 55 hectares. Roughly, if I am getting my numbers right, close to 200 acres - just of shells. So, you've got the same groups of people coming back to the same areas over thousands of years and thousands of people," Clinton said.

"Sometimes we find burials in there as well, in those midden sites that you would come back to again. You would be sitting there retelling the stories of an old Aunty or Uncle who is buried there and their life and the stories they passed on to you. And that continues that connection," he said.

Some first nations Lore is more easily translatable than others. For example, "Dooligah refers to a mythical, large, hairy creature or spirit often associated with Australian Aboriginal Cultures, particularly in Southeast Australia. It is similar to the Concept of a Yowie and is often described as a giant, hairy man-like creature. Some accounts also describe them as shy and even dangerous, especially at night! In other words, kids shut up and go to sleep," Clinton added.

"Seeing prohibited artifacts out of country can make you sick," he said, adding "Melbourne museum is full of

artifacts which should be returned to sites."

When ancestral remains including a skull were found near Darby River, Clinton camped the night by it to protect it. Many sites can't be assessed because people are not aware of where they are. Much of Clinton's work is to protect sites or record them before



they fall victim to Climate Change and the impacts of nature. This can happen quickly, as shown at Shallow Inlet. Here the mouth of the river is moving south at the rate of 50 metres a year. On the banks of Shallow Inlet Parks Victoria is working to save one midden site. Parks Restoration Ecologist Brooke Love is working with Morton to sandbag to protect the bank and strengthen it by replanting.

The Big Drift is rich with Cultural Heritage sites and was exposed by the impact of falling sea levels leaving exposed calcareous sands, which once were covered by vegetation that was eaten away by introduced animals like the cattle which still occupy the park perimeter. Clinton explained, "If we think that a Cultural site is going to be disturbed and destroyed, what are we going to choose to do in that situation? If we choose to go in and try and protect what is there and we're going to do a dig and gather back what we can so we can protect it somewhere else, that's making a deliberate choice to go in and potentially disturb a burial site. They would've been buried with proper ceremony and protocol - and you're breaking that," he added.

It's a complexity most Prom visitors may not realise.

Report by John Durie

Left: Clinton addressing the gathering

Note from editor: Photos have been attributed where known throughout the newsletter, otherwise left blank.

NEW MEMBERS

We extend a very warm welcome to the following new members:

Abigail Cant,
Natalie Spilling,
Caitlin Magner,
Greet Peersman,
Gillian Fletcher and
Monica Lorkin.

DONATIONS

Friends of the Prom has benefited from generous donations by well-wishers over the past few years. We have been using these donations to encourage scientific research at the Prom through our program of an annual grant to a tertiary student to help with expenses. We have now made the process of donating easier by registering our organisation with Landcare Victoria's Deductible Gift Recipient Fund.

You can make a tax-deductible donation via Landcare Victoria's fundraising page <https://landcarevictoria.org.au/donate>; alternatively, scan the QR-code below using your smartphone.

Please make sure you nominate 'Friends of the Prom' under 'I would like to support a particular group' on the first page of the online donation form.

This will ensure that Landcare passes on your donation to us.



MEMBERSHIP FEES

You don't have to be a financial member to participate in our activities. But if you have been to some activities and want to continue volunteering with us, we urge you to become a financial member.

Your membership fees keep us afloat, as without them we cease to exist. The fees we levy are set as low as we can make them, and they only just cover our basic running costs, such as public liability insurance and unavoidable IT expenses.

To renew your membership, please contact our Treasurer, Peter McDowell at membership@friendsoftheprom.org.au

You can pay via Direct Deposit to our Westpac account:
Account Name: Friends of the Prom Inc.
BSB: 033 152
Account Number: 188795

Single: \$15,
Couples and families : \$20,

Please remember to provide your full name as a reference so we can identify you on the bank statement.

FEEDBACK FROM YOU

If you have any thoughts on what we do, our activities, or matters raised in this newsletter, we would love to hear from you – put your comments in an email to the Secretary:

info@friendsoftheprom.org.au

EVENTS CALENDAR

SEPTEMBER TO DECEMBER 2025

Except for the nursery, a reminder with more detail about these weekend and weekday activities will be emailed to members closer to the date.

WEEKEND ACTIVITIES

DATE	ACTIVITY
Friday September 5	Grassland Restoration
Saturday September 6	Rare Species Survey
October date to be determined	Planting at Tidal River

WEEKDAY ACTIVITIES

Tidal River nursery	Every second Thursday, rain, hail or shine – meet 9:30 am at the nursery compound in Tidal River – check website for dates
Grassland Restoration on the Isthmus	October date to be advised

REGISTERING WITH PARKCONNECT

Please remember to register for all activities on *ParkConnect* and make sure you have a **Working with Children Check** loaded on to *ParkConnect*. WWCCs are now compulsory (unless you are volunteering with us for the first time).

If you need assistance with navigating your way through *ParkConnect* or the WWCC process, you can contact *Friends of the Prom's* Kelsey Fraser at kelseyv.fraser@gmail.com

Please note this is a new contact number.

CONTACTS

Media Enquiries

Olga Wilkinson
(Vice President)
info@friendsoftheprom.org.au

Membership & General Enquiries

Keith McDougall
(Secretary)
info@friendsoftheprom.org.au

Nursery Enquiries

Olga Wilkinson
0427 846 412

Treasurer

Peter McDowell
membership@friendsoftheprom.org.au